

Indira Gandhi Krishi Vishwavidyalaya, Raipur
Krishi Vigyan Kendra, Kawardha

ANNUAL PROGRESS REPORT

April 2015 to March 2016

Contents

Sl. No.	Particular	Page No
	Instructions for Filling the Format	
	Summary of KVK Annual Report (Quantifiable Achievement) for the year 2015-16	
1	General Information	6-9
2	On Farm Testing	10-15
3	Achievements of Frontline Demonstrations	16-19
4	Documentation of the need assessment conducted by the KVK for the training programme	20-22
5	Training programmes	23-26
6	Extension Activities	27-29
7	Literature Developed/Published (with full title, author & reference)	29-30
8	Production and supply of Technological products	30-31
9	Activities of Soil and Water Testing Laboratory	31
10	Rainwater Harvesting	31
11	Utilization of Farmer Hostel facilities	32
12	Utilization of Staff Quarter facilities	32
13	Details of SAC Meeting	32
14	Status of Kisan Mobile Advisory	32
15	Status of Convergence with agricultural schemes	32-33
16.	Status of Revolving Funds	33
17.	Awards & Recognition	33
18.	Details of KVK Agro-technological Park	33
19.	Farm Innovators	34
20.	KVK interaction with progressive farmers	35
21.	Outreach of KVK	35
22.	Technology Demonstration under Tribal Sub Plan on Pulses/ Programme on Harnessing Pulses/ Quality Protein Maize	35
23.	KVK Ring	35
24.	Important visitors to KVK	36-38
25.	Status of KVK Website	39
26.	Status of E-connectivity	39
27.	Status of RTI	39
28.	Status of Citizen Charter	39
29.	Attended HRD activities organized by ZPD	39
30.	Attended HRD activities organized by DES	39
31.	Attended HRD activities by KVK Staff	40
32	Agri Alert report	40
33.	Details of Technological Week Celebration	40
34.	Interventions on Drought Mitigation	40-41
35.	Proposal of NICRA	42
36.	Proposed works under NAIP	42
37.	Case study / Success Story to be developed	42-46
38.	Action Photographs	47-76

Instructions for Filling the Format

1. Do not change/modify/ delete any column of any of the table. However, additional rows can be created, if required.
2. Do not merge columns, rows.
3. Please repeat the name of KVK in each table in the column “Name of KVK”
4. Do not fill the non-numerical values in numeric field
5. Do not repeat the unit while reporting data as it is already mentioned in the heading row
6. Strictly fill the data in desired unit only. If it is reported in other unit, convert it in the desired unit
7. Please mention only standard English names of crops (Do not mention Urd, Arhar, Til, Kulthi, Moong, Bajra, etc.)
8. Additional relevant information may be provided at the end of Format by creating heading “Additional Information”
9. Also read the instructions mentioned just below the table
10. Your suggestions for improvement in the format for your simplicity as well as data compilation may be given at the end of the format
11. Do not press any Enter Key in any of the columns while making entry in the columns of the table. Use only arrow key /Tab key/ mouse pointer while movement from one column/row to another.
12. Grey color cells in summary table need not to be filled.
13. Crop name should be spelled correct and standard English name should be used i.e Cereals, Pulses, Oilseed:- Rice (not use Paddy), Wheat, Barley, Kodo, Kutki, Maize, Jwar, Bajra, Pigeon pea (not use Tur, Arhar, Red gram), Blackgram (not use Urd), Greengram (not use Moong/Moongbean), Chickpea (not use Gram, Chana), Field pea, Horse gram (Kulthi), Lentil, Mustard (not use Rai, Sarsoan), Soybean, Linseed, Groundnut, Sesame (not use Til), Niger (not use Ram Til), Safflower (not use Kusum).
Vegetable :- Vegetable pea, Bottle guard, Bitter guard, Okra (not use Bhindi or Ladies finger).
Fruits :- Mango, Guava, Custard apple, Pear etc.
Spices :- Black Peeper, Turmeric, Ginger, Cardamom etc.

REPORTING PERIOD – April 2015 to March 2016
Summary of KVK Annual Report (Quantifiable Achievement) for the year 2015-16

S.N.	Quantifiable Achievement	Number	Beneficiaries (nos.)	
1	On Farm Testing			
	Proposed OFT	16	66	
	On Going OFT	-		
	Technologies assessed (Completed OFT)	16	16	
	Technologies refined	00		
	On farm trials conducted	16	66	
2	Frontline demonstrations	-		
	Proposed Frontline demonstrations	14	137	
	On Going Frontline demonstrations	-		
	FLDs conducted on crops	07	68	
	Area under crops (ha.)	35.80		
	FLD on farm implement and tools	02	26	
	FLD on livestock/ AH enterprises (Dairy/ Sheep and Goat/Poultry/ Duckery/ Piggery etc.)	02	20	
	FLD on Fisheries - Finger lings	02	18	
	FLD on other enterprises (Bee keeping, lac, mushroom, sericulture, value addition, vermi compost, etc.)	01	05	
	FLD on Women in Agriculture - (Nutritional garden, Income generation, Value addition, Drudgery reduction, etc.)	-	-	
3	Training programmes	No. of Course	Duration (days)	Participants
	Farmers	28	28	700
	Farm women	05	05	130
	Rural youth	10	10	274
	Extension personnel/ In service	4	04	148
	Vocational trainings	02	97	50
	Sponsored Training	26	26	650
	Total	491	491	1952
		No. of programmes	Participants	
4	Extension Programmes	421	11235	
5	Production of technology inputs etc	Qty	Beneficiaries (nos.)	
	Seed (qt.)	257.31	Mass	
	Planting material produced (nos.)	175q	08	
6	Livestock	Qty	Beneficiaries (nos.)	
	Livestock strains (Nos)	Sahiwal		
	Milk Yield - Cow, Buffelo etc. (in liter)	647.25	15	
	Fish (Kg.)			
	Fingerlings (nos.)			
	Poultry-Eggs (nos.)			
	Ducks (nos.)			
	Chicks etc. (nos.)			

7	Bio Products	Qty	Beneficiaries (nos.)	
	Bio Agents -Earth worm (Kg.)			
	Trichoderma (kg.)	1.0	10	
	Bio Fertilizers- Vermi compost, Rhizobium, PSB , BGA , Mycorriza , Azotobacter , Azospirillum etc. (Kg.)			
	Bio Pesticide-Panchgavya, Neem Extract , Neem oil etc.(lit.)			
8	Any other significant achievement in the Zone	Nos.	Participants/ beneficiaries	
	Award (Best KVK award and scientist and farmer's award)	-	-	
	Publications (Res. Paper/ pop. Art./Bulletin,etc.)	4	-	
	KVK News letter	04	4000	
	SAC Meetings conducted	01	68	
	Soil sample tested	121	1421	
	Water sample tested	-	-	
	RWH System (Special training and field visit on RWH structure and MIS in KVKs)			
	KVK-KMA (Message and beneficiaries)	51	24335	
	Convergence programmes	01	04	
	Sponsored programmes	26	650	
	KVK Progressive Farmers interaction	01	10	
	No. of Technology Week Celebrations	04	445	
	Attended HRD activities organized by ZPD			
	Attended HRD activities organized by DES			
	Attended HRD activities by KVK Staff(Refresher /Short course, Training programme etc.)			
9	Current status of Revolving Funds (Amt. in Rs.)		1194956	
10		No. of blocks	No. of villages	
	Outreach of KVK in the District	04	117	
11		ICAR	SAU	Others
	No. of important visitors to KVK (nos.)	03	18	20
12		Working (Yes/No)	No. of Update	
	Status of KVK Website	Yes	10	
13		Application received	Application disposed	
	Status of RTI (nos.)			
14		Query received	Query dissolved	
	Citizen Charter (nos.)			
15		Working (Yes/No)	No. of programme viewed	
	E-connectivity			
16		Filled	Vacant	
	Staff Position	13	3	
17	Workshop/ Seminar/ Conference attended by staff of KVK (nos)	08		
18	Publication received from ICAR /other organization (nos.)	42		
19		Particulars	Organization	
	Agri alerts (epidemic, high serious nature problem, Cyclone etc. reported first time to ZPD, SAU, Agri. Deptt. and ICAR)			

GENERAL INFORMATION

1.1. Staff Position (as on date)

Summary of Staff position in KVKs on March, 2016

Name of KVK	Sanctioned Posts	PC (1)		SMS (6)		PA (3)		Admn. (6)		Total	
		Sanc.	Filled	Sanc.	Filled	Sanc.	Filled	Sanc.	Filled	Sanc.	Filled

Name of KVK	Sanction post	Name of the incumbent	Discipline	Higist degree	Subject of specilization	Pay scale	Present pay	Date of joiing	Per./Temp.	Category
Kawardha	Programme Coordinator	Vacant				37400-67000+8000 Rs. 9000				
Kawardha	Subject Matter Specialist1	Dr. B.P.Tripathi (I/c Programme Coordinator)	Plant Pathology	Ph. D.	Plant Pathology	15600-39100 + 5400 AGP		06.09.12	Temporary (On Probation)	Others
Kawardha	Subject Matter Specialist2	Dr. Nutan Ramteke	L.P.M	M. V. Sc.	L.P.M	15600-39100 + 5400 AGP		06.09.12	Temporary (On Probation)	SC
Kawardha	Subject Matter Specialist3	Er. T.S.Sonwani	F.M.P	M. Tech.	F.M.P	15600-39100 + 5400 AGP		10.09.12	Temporary (On Probation)	SC
Kawardha	Subject Matter Specialist4	Smt. Pramila Kant	Horticulture	M. Sc.	Horticulture	15600-39100 + 5400 AGP		12.09.12	Temporary (On Probation)	SC
Kawardha	Subject Matter Specialist5	Sh. B.S. Parihar	Agronomy	M.Sc.	Agronomy	15600-39100 + 5400 AGP		18.09.14	Temporary (On Probation)	Others
Kawardha	Subject Matter Specialist6	Miss Manisha Khaparde	Fisheries	M.Sc.	Fisheries	15600-39100 + 5400 AGP		01.10.14	Temporary (On Probation)	SC
Kawardha	Programme Assistant	Smt. Swati Sharma	Entomology	M.Sc.	Entomology	9300-34200+4200 AGP		05.11.14	Temporary (On Probation)	Others
Kawardha	Farm Manager	Vacant								
Kawardha	Computer Programmer	Mr. Yogesh Kumar Kaushik	Information Technology	BE (IT)	Information Technology	9300-34200+4200		12.07.2013	Temporary (On Probation)	OBC

Name of KVK	Sanction post	Name of the incumbent	Discipline	Higist degree	Subject of specilization	Pay scale	Present pay	Date of joing	Per./Temp.	Category
						AGP			Probation)	
Kawardha	Accountant / superintendent	Shri A. K. Khare		M. A.		5200 – 20200 + 2800 AGP		28.07.10	Temporary	SC
Kawardha	Stenographer	Vacant								
Kawardha	Driver	Shri Khileshwar Sahu		Higher Secondary		5200-20200 +1900AGP		01.04.13	Temporary (On Probation)	OBC
Kawardha	Driver	Shri Haran Ram Kaushik		Primary		5200-20200 +1900AGP		01.04.13	Temporary (On Probation)	OBC
Kawardha	Supporting staff	Shri. Salik Ram Lodhi		Middle		4750 – 7400 + 1300 AGP		16.09.08	Temporary (On Probation)	OBC
Kawardha	Supporting staff	Shri Shiv Kumar Lodhi		Primary		4750 – 7400 + 1300 AGP		16.09.08	Temporary (On Probation)	OBC

1.2. DISTRICT PROFILE (detail of geographical area, cultivation, Land, resources, opportunities, irrigation, populations etc.)–

KVK Name	Agro-climatic zone	No . of Blocks	No. of Panchayats	Population	Literacy	SC and ST Population	No. of farmers	Average land holding
Kawardha	CG Plain	04	371	539660	61.95%	62466	154040	1.8 ha

Sr. No.	Particulars	Quantity/Area
1.	Geographic Area	4.44 lac ha
2.	Rainfall	830.00 mm
3.	Forest Area	1.81 lac ha
4.	Double Cropped Area	0.91 lac ha
5.	<i>Kharif</i> Area	1.58 lac ha
6.	<i>Rabi</i> Area	1.19 lac ha
7.	Total Cultivated Area	2.77 lac ha
8.	Net Cultivated Area	1.85 lac ha
9.	Cropping Intensity	149 %
10.	Barren Land	1.84 lac ha
11.	Cultivable fallow land	0.027 lac ha
12.	Pasture lands	0.28 lac ha
13.	Kharif Irrigated Area	0.75 lac ha
14.	Rabi Irrigated Area	0.42 lac ha
15.	Net Irrigated Area	0.69 lac ha

1.3. DETAILS OF ADOPTED VILLAGE during the reporting period (Approved by competent Authority in meetings/workshops)

KVK Name	Village Name	Year of adoption	Block Name	Distance from KVK	Population	Number of farmers (having land in the village)
Kawardha	Sonversa	2014-15	Kawardha	18km	1365	175
Kawardha	Sukhatal	2014-15	Kawardha	22km	1000	125

1.4. THRUST AREAS identified by KVK (Approved by competent Authority in meetings/workshop)

KVK Name	THRUST AREA
Kawardha	Varietal replacement in various crops
Kawardha	Change in Paddy-chick pea/ soybean- chick pea cropping systems
Kawardha	Introduction of sugarcane varieties resistant to red rot, root borer and shoot borer
Kawardha	Insuring production and availability of <i>Trichoderma viride</i> locally
Kawardha	Combined use of organic manures and inorganic fertilizer
Kawardha	Enhancement of milk & meat productivity through improved breeds
Kawardha	Farm mechanization through improved agricultural implements
Kawardha	Employment generation for rural women & rural youth through income generation activities

1.4. PROBLEM IDENTIFIED by KVK (Approved by competent Authority in meetings/workshop)

KVK Name	Problem identified	Methods of problem identification	Location Name of Village & Block
Kawardha	Lack of awareness of improved agricultural technologies	Discussion with farmers, field visit	Minminiya jangal/Bodla
Kawardha	Non-availability of quality seeds of suitable HYVs	Discussion with farmers	Sonbarsa, sukhatal/Kawardha
Kawardha	Lack of suitable agricultural implements for seeding of crops	Discussion with farmers, field visit	Telainar/S.Lohara
Kawardha	Lack of proper agricultural infrastructures including irrigation	Discussion with farmers	Taregaon jangal/Bodla
Kawardha	Non-awareness regarding effective control of various pests and diseases (insects, diseases and weeds)	Discussion with farmers and Field visit	Daujari, Rehangi/Kawardha
Kawardha	High incidence of pests and diseases, Improper use of fertilizer and chemicals	Discussion with farmers, field visit	/Pandariya
Kawardha	Less knowledge about post harvest handling of agriculture produce	Discussion with farmers, field visit	mirmitti/Kawardha

2. On Farm Testing

Note-

- * Thematic area should be spelled correct and follow standard pattern i.e. Integrated Nutrient Management in place of INM or Inte. Nutrient Mngt. Etc.
- * Crop name should be spelled correct and standard English name should be used i.e Chick pea in place of gram/chana , Paddy in place of Rice/chawal , brinjal in place of egg plant/bhata/baigan etc.
- * Don't press enter key to navigate among column use arrow or tab key
- * don't add space before or after statement within the table cell

2.1 Information about OFT

KVK name	Year	Season	Problem diagnose	Title of OFT	Category of technology (Assessment/Refinement)	Thematic Area	Crop/enterprise	Farming Situations	No. of trials	Results (q/ha)			Net Returns (Rs./ha)			Recommendations
										FP (T1)	RP (T2)	T3	FP (T1)	RP (T2)	T3	
Kawardha	2015	Kharif	Use of high seed rate coupled with heavy infestation of weeds in biased system of rice cultivation. Sometimes crop fails due to drought situation occurred at the time of biased. Sometimes crop fails due to drought situation occurred at the time of biased	Assessment of crop management practices in line sown direct seeded rice	Assessment	Integrated crop management	Paddy / Herbecides	Rainfed lowland (Dorsa)	04	45.67	49.70		34098	41630		
Kawardha	2015	Kharif	Heavy loss of crop due to stem borer infestation in rice	Assessment of IPM modules for stem borer in paddy	Assessment	Integrated Pest Management	Paddy /Agrochemical	Rainfed lowland (Dorsa)	04	50.10	56.33	55.80	40270	51162		50420
Kawardha	2015	Kharif	Improper, untimely and defective method of Fungicides application	Assessment of IDM modules for False Smut disease in Paddy	Assessment	Integrated Disease Management	Paddy /Agrochemical	Rainfed lowland (Dorsa)	04	45.32	49.52		34748	39928		
Kawardha	2015	Kharif	Heavy Yield Loss due to Weed Infestation, Labour Problem	Assessment of chemical weed management in Soybean	Assessment	Weed Management	Soybean/ herbicides	Rainfed upland (Kanhar)	04	10.34	12.40	12.18	20356	26560		25712

Kawardha	2015	Kharif	Improper, untimely and defective method of Fungicides application	Assessment of IDM modules for Blast disease in Paddy	Assessment	Integrated Disease Management	Paddy /Agrochemical	Rainfed lowland (Dorsa)	04	45.36	49.74		34534	40336		
Kawardha	2015	Kharif	Low yield of existing varieties	Assessment of high yielding variety of Onion	Assessment	Varietal Evaluation	variety of onion Bhima Dark red	Irrigated Upland (Kanhar)	04	128.00	176.00		95000	139000		
Kawardha	2015	Kharif	Heavy plant mortality of gram either due to collar rot or wilt complex when grown after soybean in irrigated conditions	Assessment of Soybean-based Cropping Systems Under Assured Irrigation	Assessment	Integrated crop management	Soybean/Wheat	Irrigated Upland (Kanhar)	04	11.80	168.34	27.5	42700	87092	25050	
Kawardha	2015	Kharif	Low yield Due to traditional method of sowing because broadcasting causes improper coverage of seed and fertilizer, Drainage or water logging	Assessment of Raised bed planter for line sowing of soybean	Assessment	Farm Machineries	Raised bed planter	Rainfed upland (Kanhar)	05	10.20	14.12	12.39	25600	39980	33560	
Kawardha	2015	Kharif	Poor Survival of fish spawn due to lack of feeding material in nursery pond	Assessment of fry production	Assessment	Fry production	Nursery pond management	-	04	30	42		35351	65230		
Kawardha	2015	Kharif	Too much mortality of carp fry during rearing management due to aquatic insects and predatory and weed fishes	Assessment of pre stocking management of carp fry to see its servility	Assessment	Pest Control	Fishes	-	04	2.20	6.53		8560	18450		

Kawardha	2015-16		High cost of poultry meat	Assessment on backyard Quail farming	Assessment	Livestock production and management	Quail farming as backyard poultry	-	04	0.26kg in 2 month	0.25kg in 2 month		1605	2492		
Kawardha	2015-16		Low meat and egg production in desi poultry bird	Assessment of Improved poultry bird Kadaknath	Assessment	Livestock production and management	Poultry Farming	-	04	1.0 kg in 4 month	1.5 kg in 4 month		7640	14360		
Kawardha	2015	Kharif	Not available labors at the time and high cost for harvesting through manually.	Assessment of self propelled vertical conveyor reaper for harvesting of wheat	Assessment	Farm Machineries	self propelled vertical conveyor reaper	Rainfed upland (Kanhar)	05	0.005	.375		21635	25575		
Kawardha	2015-16	Rabi	Heavy plant mortality in Chickpea due to collar rot when grown after rice in irrigated conditions	Assessment of <i>Trichodarm a viride</i> for control of Chickpea collar rot	Assessment	Integrated Diseases Management	Chickpea, Bioagent	Partially irrigated upland (Kanhar)	04	11.85	13.22		30200	32380		
Kawardha	2015-16	Rabi	Low yield due to local variety	Assessment of New Variety of Onion (Bhima Shakti)	Assessment	Varietal Evaluation	variety of onion Bhima Shakti	-	04	126.00	187.00		69800	107600		
Kawardha	2015	Rabi	Low yield due to Pod Borer	Assessment of IPM modules for Gram against Pod Borer	Assessment	Integrated Pest Management	Gram/Agro chemical	-	04	12.45	14.12		32700	38880		

2.2 Economic Performance

KVK name	OFT Title	Parameters			Average Cost of cultivation (Rs/ha)			Average Gross Return (Rs/ha)			Average Net Return (Rs/ha)			Benefit-Cost Ratio (Gross Return / Gross Cost)		
		Name and unit of Parameter	FP (T ₁)	RP (T ₂)	FP (T ₁)	RP (T ₂)	Refined Practice, if any (T ₃)	FP (T ₁)	RP (T ₂)	Refined Practice, if any (T ₃)	FP (T ₁)	RP(T ₂)	Refined Practice, if any (T ₃)	FP (T ₁)	RP (T ₂)	Refined Practice, if any (T ₃)
Kawardha	Assessment of crop management practices in line sown direct seeded rice	Yield/q/ha	45.67	49.70	29840	27950		63938	69580		34098	41630		2.14	2.49	
Kawardha	Assessment of IPM modules for stem borer in paddy	Yield/q/ha	50.10	56.33	29870	27700	27700	70140	78862	78120	40270	51162	50420	2.34	2.84	2.82
Kawardha	Assessment of IDM modules for False Smut disease in Paddy	Yield/q/ha	45.32	49.52	28700	29400		63448	69320		34748	39928		2.21	2.35	
Kawardha	Assessment of chemical weed management in Soybean	Yield/q/ha	10.34	12.40	14800	15600	15700	35156	42160	41412	20356	26560	25712	2.37	2.70	2.63
Kawardha	Assessment of IDM modules for Blast disease in Paddy	Yield/q/ha	45.36	49.74	28970	29300		63504	69636		34534	40336		2.19	2.38	
Kawardha	Assessment of high yielding variety of Onion	Yield/q/ha	128.00	176.00	33000	37000		128000	176000		95000	139000		2.87	3.75	
Kawardha	Assessment of Soybean-based Cropping Systems Under Assured Irrigation	Yield/q/ha	11.80	168.34	15350	47580	16200	41300	134672	41250	42700	87092	25050	2.69	2.83	2.54
Kawardha	Assessment of Raised bed planter for line sowing of soybean	Yield q/ha	10.20	14.12	15200	16000	16000	40800	49560	56000	25600	39980	33560	2.68	3.42	3.09

Kawardha	Assessment of fry production	Yield q/ha	30	42	15609	20000		50960	75230		35351	65230		2.2	3.2
Kawardha	Assessment of pre stocking management of carp fry to see its servility	Yield q/ha	2.20	6.53	6500	8900		15060	27350		8560	18450		2.31	3.07
Kawardha	Assessment on backyard farming Quail	Body wt./Bird (kg)	0.26 kg in 2 month	0.25 kg in 2 month	3790	1308		5395	3800		1605	2495		1.42	2.9
Kawardha	Assessment of Improved poultry bird Kadaknath	Body wt./Bird (kg)	1.0 kg in 4 month	1.5 kg in 4 month	3780	6040		11420	20400		7640	14360		3.02	3.3
Kawardha	Assessment of <i>Trichodarma viride</i> for control of Chickpea collar rot	Yield q/ha	11.85	13.22	17200	17500		47400	52800		30200	32380		2.75	3.02
Kawardha	Assessment of self propelled vertical conveyor reaper for harvesting of wheat	Field Capacity (Ha/hr)	0.005	.375	16200	15490		41775	37125		21635	25575		2.57	2.39
Kawardha	Assessment of New Verirty of Onion (Bhima Shakti)	Yield q/ha	126.00	187.00	31000	37000		100800	149600		69800	112600		2.25	3.04
Kawardha	Assessment of IPM modules for Gram against Pod Borer	Yield q/ha	12.45	14.12	17100	17600		49800	56480		32700	38880		2.91	3.21

2.3 Information about Home Science OFT:

KVK Name	Year	Season	Problem diagnose	Title of OFT	Category of technology (Assessment/Refinement)	Thematic Area	Details of Technology Selected for Assessment	Characteristics of Technology / Variety / Product / Enterprise	Farming / Enterprise Situation	No. of trials	Recommendations

2.4 Economic Performance Home Science OFT:

KVK name	OFT Title	Performance Indicator / Parameter																					
		Output m ² /h		Est. Energy Expenditure kj/min.		WHR beat/min		% reduction in drudgery		% increase in efficiency		Production per unit		Cost of input		Incremental income		Yield(Kg/ha)		Net Return		Saving in Rs	BC ratio
		T1	T2	T1	T2	T1	T2	T1	T2	T1	T2	T1	T2	T1	T2	T1	T2	T1	T2	T1	T2		

2.5 Feedback from KVK to Research System

Name of KVK	Feedback
Kawardha	<p>Soybean cultivated under rain fed condition has to face drought at pod filling stage, so short duration and drought tolerant varieties are to be developed.</p> <p>High Yielding and resistant variety to blast disease be developed for replacement of swarna due to heavy infestation of blast disease in swarna</p> <p>Resistant/tolerant varieties of chick pea to collar rot be developed as it is major problem in this area</p> <p>Suitable Paddy/soybean based cropping system for replacement of chick pea is to be identified as there is problem of wilt complex diseases in chickpea in the area</p> <p>Doses and duration of fertilizers as well as agrochemicals through drip for production and protection of sugarcane be quantified</p>

3. Achievements of Frontline Demonstrations

3.1. Follow-up for results of FLDs implemented during previous years

List of technologies demonstrated and popularized during previous years and recommended for large scale adoption in the district

KVK Name	Crop/ Enterprise	Thematic Area	Technology demonstrated	Details of popularization methods suggested to the Extension system	Horizontal spread of technology		
					No. of villages	No. of farmers	Area in ha
Kawardha	Paddy	Varietal Evaluation	Variety	Visit of other farmers in the Demonstration plots, Discussion with other farmers, Distribution of literatures.	212	1825	2642
Kawardha	Soybean	Varietal Evaluation	Variety	Visit of other farmers in the Demonstration plots, Discussion with other farmers, Distribution of literatures.	6	560	1020
Kawardha	Elephant foot yaam (Zimikand)	Varietal Evaluation	Variety	Visit of other farmers in the Demonstration plots, Discussion with other farmers, Distribution of literatures.	16	1500	50
Kawardha	Soybean	Farm Mechanization	Seed cum fertilizer drill introduce	Visit of other farmers in the Demonstration plots, Discussion with other farmers, Distribution of literatures.	40	655	1050
Kawardha	Mushroom	Mushroom cultivation	Mushroom Production	Visit of other farmers in the Demonstration plots, Discussion with other farmers, Distribution of literatures.	6	20	50
Kawardha	Fish, Duck	Fish cum duck culture	Integrated fish cum duck culture	Visit of other farmers in the Demonstration plots, Discussion with other farmers, Distribution of literatures	5	25	-
Kawardha	Fish Production & management	Fish production	Fish Production & management	Demonstration plots, Discussion with other farmers, Distribution of literatures.	320	450	2550
Kawardha	Gram	Varietal Evaluation	Variety	Visit of other farmers in the Demonstration plots, Discussion with other farmers, Distribution of literatures.	20	100	100
Kawardha	Wheat	Farm Mechanization	Seed cum fertilizer drill	Visit of other farmers in the Demonstration plots, Discussion with other farmers, Distribution of literatures.	20	50	200
Kawardha	Wheat	Varietal Evaluation	Variety	Visit of other farmers in the Demonstration plots, Discussion with other farmers, Distribution of literatures.	2	10	10
Kawardha	Sugarcane	Diseases Management	Agrochemical	Visit of other farmers in the Demonstration plots	6	20	50
Kawardha	Azolla	Livestock production and management	Demonstration on Azolla cultivation for feeding of milch animal	Visit of other farmers in the Demonstration plots	6	20	50
Kawardha	Neem and Karanj oil	Livestock production and management	Demonstration on the effect of herbal oil (Neem and Karanj) to control ecto parasites in dairy animals	Visit of other farmers in the Demonstration plots	6	20	50
Kawardha	Arbi	Varietal Evaluation	Variety	Visit of other farmers in the Demonstration plots	6	20	50

Note-

* Thematic area should be spelled correct and follow standard pattern i.e. Integrated Nutrient Management in place of INM or Inte. Nutrient Mngt. Etc.

*Crop name should be spelled correct and standard English name should be i.e Chick pea in place of gram, Paddy in place of Rice , brinjal in place of egg plant etc.

*Don't press enter key to navigate among col use arrow or tab key

*don't add space before or after statement within the table cell

3.2 Details of FLDs implemented

KVK Name	year	Season	Thematic area	Technology demonstrated	Name of Crop/ Enterprise	Name of Variety/Technology/Enterprizes	Crop-Area (ha) / Entrep - No.	Results (q/ha)		% change	No. of farmers				
								FP (T ₁)	RP (T ₂)		SC	ST	Others	General	Total
Kawardha	2015	Kharif, 2015	Varietal Evaluation	Variety	Paddy	Indira sona	5	50.10	56.82	13.41	-	-	11	1	12
Kawardha	2015	Kharif, 2015	Varietal Evaluation	Variety	Soybean	JS-95-60	5	10.0	12.39	23.90	12	-	-	-	12
Kawardha	2015	Kharif, 2015	Varietal Evaluation	Variety	Elephant foot yaam (Zimikand)	Gajendra	.4	223	378	69.50	-	-	1	3	4
Kawardha	2015	Kharif	Farm Mechanization	Seed cum fertilizer drill introduce	Soybean	Seed drill	5	10.00	12.39	23.90	13	-	-	-	13
Kawardha	2015-16	Kharif-Rabi & Zaid	Mushroom cultivation	Mushroom Production	Mushroom	Pleurotus florida	-	-	725 gm/bag	-	-	-	4	1	5
Kawardha	2015-16	Kharif-& Rabi	Fish cum duck culture	Integrated fish cum duck culture	Fish, Duck	Fish-(Catla, Rohu, Mrigal) duck breed (Khakhi Campbell)	0.5	25.3	32.9	30.03	8	-	-	-	8
Kawardha	2015-16	Kharif & Rabi	Fish production	Fish Production & management	Fish Production & management	Composite fish production	0.5	17	35	105.8	-	2	8	-	10
Kawardha	2015-16	Rabi	Varietal Evaluation	Variety	Gram	JG-14	5	12.90	14.65	13.56	-	-	12	-	12

Kawardha	2015-16	Rabi	Farm Mechanization	Seed cum fertilizer drill	Wheat	Seed Drill	5	24.75	28.06	13.37	13	-	-	-	13
Kawardha	2015-16	Rabi	Varietal Evaluation	Variety	Wheat	Ratan	5	24.75	28.06	13.37	12	-	-	-	12
Kawardha	2015-16	Rabi	Diseases Management	Agrochemical	Sugarcane	Hot water Treatment at 50° for 30 minutes & Tebuconazole 50%	5	765.00	880.00	15.02	12	-	-	-	12
Kawardha	2015-16	Rabi and Kharif	Livestock production and management	Demonstration on Azolla cultivation for feeding of milch animal	Azolla	Azolla Pinata	10	2.0 liter/day	2.5 liter/day	20	02	03	05	-	10
Kawardha	2015-16	Rabi and Kharif	Livestock production and management	Demonstration on the effect of herbal oil (Neem and Karanj) to control ecto parasites in dairy animals	Neem and Karanj oil	Application of herbal oil	10	60% infestation of tick	18%	70	-	04	06	-	10
Kawardha	2015-16	Rabi	Varietal Evaluation	Variety	Arbi	Indira Arbi-1	0.4	120	183	52.50	-	-	04	-	04

3.3 Economic Impact of FLD

KVK Name	Technology demonstrated	Name of Crop/ Enterprise	Parameters			Cost of cultivation (Rs/ha)		Gross Return (Rs/ha)		Average Net Return (Rs/ha)		Benefit-Cost Ratio (Gross Return / Gross Cost)	
			Name and unit of Parameter	FP (T ₁)	RP (T ₂)	FP (T ₁)	RP (T ₂)	FP (T ₁)	RP (T ₂)	FP (T ₁)	RP (T ₂)	FP (T ₁)	RP (T ₂)
Kawardha	Variety	Paddy	Yield q/ha	50.10	56.82	30300	28100	70140	79548	39840	51448	2.31	2.83
Kawardha	Variety	Soybean	Yield q/ha	10.00	12.39	15200	16000	40000	49560	24800	33560	2.63	3.09
Kawardha	Variety	Elephant foot yaam (Zimikand)	Yield q/ha	223.00	378.00	165000	240000	267600	453600	102600	213600	1.62	1.89
Kawardha	Seed cum fertilizer drill introduce	Soybean	Yield q/ha	10.00	12.39	15200	16000	40000	49560	24800	33560	2.63	3.09

Kawardha	Mushroom Production	Mushroom	Yield q/ha	-	725 gm/bag	-	1300	-	-	-	-	-	-
Kawardha	Integrated fish cum duck culture	Fish, Duck	Yield q/ha	25.3	32.9	31000	32620	95000	120000	64000	87380	3.06	3.67
Kawardha	Fish Production & management	Fish Production & management	Yield q/ha	17	35	20000	22500	60000	95000	40000	72500	3	4.2
Kawardha	Variety	Gram	Yield q/ha	12.90	14.65	14600	15500	58050	65925	43450	50425	3.97	4.25
Kawardha	Seed cum fertilizer drill	Wheat	Yield q/ha	24.75	28.06	15490	16200	37125	39284	21635	23084	2.42	2.57
Kawardha	Variety	Wheat	Yield q/ha	24.75	28.06	15490	16200	37125	39284	21635	23084	2.42	2.57
Kawardha	Agrochemical	Sugarcane	Yield q/ha	765.00	880.00	76100	74200	175950	202400	99850	128200	2.31	2.72
Kawardha	Demonstration on Azolla cultivation for feeding of milch animal	Azolla	Kg/day	2.0	2.5	50 Rs/day	40 Rs/day	80 Rs/day	100 Rs/day	30 Rs/day	60 Rs/day	1.6	2.5
Kawardha	Demonstration on the effect of herbal oil (Neem and Karanj) to control ecto parasites in dairy animals	Neem and Karanj oil	% infestation of tick	60	18	30 Rs/day	25 Rs/day	40 Rs/day	48 Rs/day	10 Rs/day	23 Rs/day	1.33	1.9
Kawardha	Variety	Arbi	Yield q/ha	120.00	183.00	31000	43000	120000	183000	89000	140000	2.87	3.26

3.4 Information about Home Science FLDs

KVK name	Year	Season	Thematic Area	Problem Identified	Technology to be Demonstrated as Solution to the Identified Problem	Crop/ Enterprise (In which crop Enterprise or Farming Activity)	Name of Variety/Technology/Enterprizes	Farming Situation	Proposed area (ha)	No. of Beneficiaries

3.5 Economic Performance Home Science FLDs:

KVK name	Technology to be Demonstrated	Performance Indicator / Parameter																					
		Output m ² /h		Est. Energy Expenditure kj/min.		WHR beat/min		% reduction in drudgery		% increase in efficiency		Production per unit		Cost of input		Incremental income		Yield(Kg/ha)		Net Return		Saving in Rs	BC ratio
		T1	T2	T1	T2	T1	T2	T1	T2	T1	T2	T1	T2	T1	T2	T1	T2	T1	T2				

3.6 Training and Extension activities proposed under FLD

KVK Name	Crop	Activity	No. of activities organized	Number of participants	Remarks
Kawardha	Soybean, Pigeon pea, Chickpea, Linseed, Lentil, Mustard	Field days	06	652	
Kawardha	Soybean, Pigeon pea, Chickpea, Linseed, Lentil, Mustard	Farmers Training	30	810	
Kawardha	Soybean, Pigeon pea, Chickpea, Linseed, Lentil, Mustard	Media coverage	10	Mass	
Kawardha	Soybean, Pigeon pea, Chickpea, Linseed, Lentil, Mustard	Training for extension functionaries	04	148	

3.7 Details of FLD on crop hybrids.

S. No.	Name of the KVK	Name of the Crop	Name of the Hybrids	Source of Hybrid (Institute/Firm)	No. of farmers	Area in ha.
01	Kawardha	Paddy	Indira Sona	IGKV,Raipur	12	5

4. Feedback System

4.1. Feedback of the Farmers to KVK

Name of KVK	Feedback			
	Technology appropriations	Methodology used	Benefits of OFT/FLD	Future Adoption
Kawardha	Use of IPM modules for stem borer in paddy	1. One row of Aromatic Paddy after nine line of main crop	OFT	Yes
Kawardha	Oyster Mushroom production	Low cost technology	FLD	Yes

4.2. Feedback from KVK to Research System.

Name of KVK	Feedback basic of OFT on Technology Tested
Kawardha	Although the yield of JS -93-05 is lower than JS -335, attack of girdle beetle is less in JS- 93-05 as compared to JS-335 and other varieties Use of herbicide is far better as there is labour problem, if we see for labour for manual weeding, it gets very late. Problem of wilt complex is more in chickpea taken after Paddy as compared to chick pea taken after soybean.

4. Documentation of the need assessment conducted by the KVK for the training programme

Name of KVK	Category of the training	Methods of need assessment	Date and place	No. of participants involved
Kawardha	Farmers & Farm women	Field visits, Group discussion with the farmers	April, 2015, Village – Kosmanda	27
Kawardha	Rural Youth	Field visits, Group discussion with the farmers	April, 2015, Village – Neurgaon Khurd	32
Kawardha	In-service Personnel	Field visits, Group discussion with the farmers	May, 2015 Village – Udiya khurd	18

Abbreviation Used

FW	(A) Farmers & Farm Women
RY	(B) Rural Youths
IS	(C) Extension Personnel
ONC	On Campus Training Programme
OFC	Off Campus Training Programme
M	Male
F	Female
T	Total
Thematic Areas for Training	
CRP	Crop Production
HOV	Horticulture – Vegetable Crops
HOF	Horticulture-Fruits
HOO	Horticulture- Ornamental Plants
HOP	Horticulture- Plantation crops
HOT	Horticulture- Tuber crops
HOS	Horticulture- Spices
HOM	Horticulture- Medicinal and Aromatic Plants
SFM	Soil Health and Fertility Management
LPM	Livestock Production and Management
WOE	Home Science/Women empowerment
AEG	Agril. Engineering
PLP	Plant Protection
FIS	Fisheries
PIS	Production of Inputs at site
CBD	Capacity Building and Group Dynamics
AGF	Agro-forestry
OTH	Others
RYH	Rural Youth
EXP	Extension Personnel

5. TRAINING PROGRAMMES

1. Training programmes should be strictly covered under above mentioned thematic areas only,
2. For category, training type and thematic area, mention code/abbreviations only

Table 5.1. Details of Training programmes conducted by the KVKs

Name of KVK	Category	Training Type	Thematic area	Training Title	No. of Courses	Duration (Days)	Participants							
							Gen		SC		ST		Others	
							M	F	M	F	M	F	M	F
1	2	3	4	5	7	8	9	10	11	12	13	14	15	16
Kawardha	FW	OFC	HOV	Off-season vegetables production	1	1	8	0	2	0	7	3	4	3
Kawardha	FW	OFC	HOV	Vegetable production technology	1	1	7	2	3	2	4	2	4	2
Kawardha	FW	OFC	HOF	Micro irrigation systems of orchards tomato	1	1	8	3	8	0	3	0	5	0
Kawardha	FW	OFC	HOF	Training & pruning in fruit crops	1	1	8	0	0	3	0	2	9	2
Kawardha	FW	OFC	HOF	Layout and management of orchard	1	1	6	0	2	0	2	0	9	0
Kawardha	FW	ONC	HOF	Use of drips in orchard	1	1	6	0	6	0	6	3	6	3
Kawardha	FW	ONC	HOF	Plant propagation techniques	1	1	7	2	2	2	2	2	6	2
Kawardha	FW	ONC	HOF	Fruit preservation technique	1	1	4	1	4	1	4	1	8	1
Kawardha	FW	OFC	HOP	Production and Management technology	1	1	5	2	5	0	5	0	6	0
Kawardha	FW	OFC	HOT	Processing and value addition	1	1	6	2	6	2	4	2	4	2
Kawardha	FW	ONC	CP	Weed Management	1	1	6	1	6	1	6	1	6	1
Kawardha	FW	ONC	CP	Crop Diversification	1	1	7	2	2	2	2	2	4	2
Kawardha	FW	ONC	CP	Water management	1	1	3	2	3	0	3	3	12	3
Kawardha	FW	OFC	CP	Nursery Management	1	1	5	2	7	2	7	2	5	2
Kawardha	FW	OFC	CP	Seed Production	1	1	7	0	7	0	7	0	6	0
Kawardha	FW	OFC	CP	Integrated crop management	1	1	8	0	8	0	4	3	4	3
Kawardha	FW	OFC	CP	Production of organic inputs	1	1	8	2	0	2	0	2	12	2
Kawardha	FW	OFC	CP	Cropping Systems	1	1	8	3	5	3	5	3	7	3
Kawardha	FW	OFC	SFM	Soil fertility management	1	1	6	0	6	0	6	0	6	0
Kawardha	FW	OFC	SFM	Micro nutrient deficiency in crops	1	1	2	0	2	0	2	2	8	2
Kawardha	FW	ONC	SFM	Nutrient Use Efficiency	1	1	11	0	2	0	2	0	2	0
Kawardha	FW	ONC	SFM	Soil and Water Testing	1	1	2	0	2	0	2	4	7	4
Kawardha	FW	OFC	SFM	Soil Sampling Technique	1	1	6	0	2	0	2	3	4	3
Kawardha	FW	OFC	SFM	Fertilizer Calculation	1	1	5	2	5	2	5	2	5	2
Kawardha	FW	OFC	PLP	Integrated Pest Management	1	1	7	0	2	0	2	0	5	0

Name of KVK	Category	Training Type	Thematic area	Training Title	No. of Courses	Duration (Days)	Participants							
							Gen		SC		ST		Others	
							M	F	M	F	M	F	M	F
1	2	3	4	5	7	8	9	10	11	12	13	14	15	16
Kawardha	FW	OFC	PLP	Integrated Disease Management	1	1	6	3	6	0	6	2	4	2
Kawardha	FW	ONC	PLP	Insect Pest of Oilseed Crops	1	1	2	0	2	0	2	0	5	0
Kawardha	FW	ONC	PLP	Diseases of Plantation crop	1	1	6	2	5	0	5	2	3	2
Kawardha	FW	OFC	PLP	Diseases of Vegetable crop	1	1	9	0	7	0	7	0	7	0
Kawardha	FW	OFC	PLP	Disease and Insect of Pulse crop	1	1	8	0	2	0	2	2	7	2
Kawardha	FW	OFC	FIS	Integrated fish farming	1	1	9	2	3	0	3	3	3	3
Kawardha	FW	OFC	FIS	Carp breeding and hatchery management	1	1	7	3	2	0	2	2	4	2
Kawardha	FW	OFC	FIS	Carp fry and fingerling rearing	1	1	12	0	4	0	4	3	4	3
Kawardha	FW	ONC	FIS	Composite fish culture	1	1	7	3	7	0	7	0	8	0
Kawardha	FW	ONC	FIS	Hatchery management and culture of freshwater prawn	1	1	8	0	2	0	8	3	8	3
Kawardha	FW	ONC	FIS	Fish diseases	1	1	7	2	3	2	4	2	9	2
Kawardha	FW	ONC	FIS	Nursery rearing of Fish	1	1	8	3	8	0	8	0	5	0
Kawardha	FW	OFC	PIS	Bio-fertilizer production	1	1	11	0	0	3	0	2	9	2
Kawardha	FW	OFC	PIS	Vermi-compost production	1	1	6	0	2	0	2	0	7	0
Kawardha	FW	OFC	PIS	Organic manures production	1	1	6	0	6	0	6	3	6	3
Kawardha	FW	OFC	AEG	Uses Seed drill introduction	1	1	9	2	2	2	2	2	6	2
Kawardha	FW	OFC	AEG	Uses Zero seed drill	1	1	4	1	4	1	4	1	8	1
Kawardha	FW	OFC	AEG	Uses Power tiller	1	1	8	2	5	0	5	0	7	0
Kawardha	FW	OFC	AEG	Uses Power reaper	1	1	6	2	6	2	6	2	4	2
Kawardha	FW	OFC	AEG	Uses Bullock operator implement	1	1	8	1	6	1	6	1	6	1
Kawardha	FW	OFC	AEG	Uses of Raised Bed planter	1	1	5	0	2	0	5	3	8	3
Kawardha	FW	OFC	AEG	Uses of Raised Bed planter	1	1	7	2	3	2	4	2	6	2
Kawardha	FW	OFC	LPM	Fodder production and feeding management	1	1	6	3	8	0	6	0	5	0
Kawardha	FW	ONC	LPM	Breeding management	1	1	6	0	0	3	0	2	9	2
Kawardha	FW	ONC	LPM	Care and management of calf	1	1	6	0	2	0	2	0	6	0
Kawardha	FW	ONC	LPM	Care and Buffalo management of cow and	1	1	6	0	6	0	6	3	6	3
Kawardha	FW	OFC	LPM	Vaccination and control measure	1	1	7	2	2	2	2	2	6	2
Kawardha	FW	OFC	LPM	Control of Ecto and Endo Parasites	1	1	4	1	4	1	4	1	8	1
Kawardha	FW	ONC	PLP	Insect Pest of Sugarcane	1	1	5	2	5	0	5	0	7	0
Kawardha	FW	OFC	PLP	Diseases of Sugarcane	1	1	6	2	6	2	3	2	4	2
Kawardha	RY	ONC	RY	Oyester Mushroom Production Technology	1	1	5	1	6	1	3	1	6	1

Name of KVK	Category	Training Type	Thematic area	Training Title	No. of Courses	Duration (Days)	Participants							
							Gen		SC		ST		Others	
							M	F	M	F	M	F	M	F
1	2	3	4	5	7	8	9	10	11	12	13	14	15	16
Kawardha	RY	ONC	RY	Production Technology of <i>Trichodarma</i>	1	1	6	2	2	2	2	2	4	2
Kawardha	RY	ONC	RY	Post harvest technology of Fruit Crops	1	1	3	2	3	0	3	3	9	3
Kawardha	RY	ONC	RY	Nursery management technique of Vegetables	1	1	5	2	7	2	7	2	5	2
Kawardha	RY	ONC	RY	Post harvest technology of Vegetables	1	1	7	0	7	0	4	0	3	0
Kawardha	RY	ONC	RY	Production Technology of <i>Trichodarma</i>	1	1	8	0	8	0	4	3	4	3

Table 5.2. Details of Vocational training programmes for Rural Youth conducted by the KVKs

Name of KVK	Training title	Crop / Enterprise	Identified Thrust Area	Duration of training (days)	Number of Beneficiaries									
					Gen		SC		ST		Others			
					M	F	M	F	M	F	M	F		
Kawardha	Oyster Mushroom Production Technology	Mushroom	Income Generation	6										
Kawardha	Production Technology of <i>Trichodarma</i>	<i>Trichodarma</i>	Disease Management	5										
Kawardha	Nursery management technique of Vegetables	Vegetables	Production and Management	5										
Kawardha	Post harvest technology of Vegetables and Fruits	Vegetable/Fruits	Income Generation	5										
Kawardha	Operation and maintenance of Important farm Implements	Implements	Agril. Engineering	5										
Kawardha	Crop production (SRI)	Paddy	Crop production	6										
Kawardha	Oyster Mushroom Production Technology	Mushroom	Income Generation	6										
Kawardha	Production Technology of <i>Trichodarma</i>	<i>Trichodarma</i>	Disease Management	5										
Kawardha	Fruit and vegetable preservation	Vegetable/Fruits	Income Generation	60										
Kawardha	Repair and maintenance of Sprayer and duster	Sprayer and duster	Agril. Engineering	37.5										

Table 5.3. Details of training programme conducted for livelihood security in rural areas by the KVKs

Name of KVK	Training title	Self employed after training			Number of persons employed elsewhere
		Type of units	Number of units	Number of persons employed	

Table 5.4. Sponsored Training Programmes

Name of KVK	Title	Thematic area (as given in abbreviation table)	Sub-theme (as per column no 5 of Table T1)	Client (FW/ RY/ IS)	Duration (days)	No. of courses	No. of Participants								Sponsoring Agency	Fund received for training (Rs.)
							Gen		Others		SC		ST			
							M	F	M	F	M	F	M	F		
Kawardha	Off-season vegetables production	HOV	-	FW	1	1	8	0	2	0	8	3	8	3	Dept. of Ag.	
Kawardha	Vegetable production technology	HOV	-	FW	1	1	7	2	3	2	4	2	6	2	Dept. of Ag.	
Kawardha	Micro irrigation systems of orchards tomato	HOF	-	FW	1	1	8	3	8	0	7	0	5	0	Dept. of Ag.	
Kawardha	Training & pruning in fruit crops	HOF	-	FW	1	1	7	0	0	3	0	2	9	2	Dept. of Ag.	
Kawardha	Layout and management of orchard	HOF	-	FW	1	1	6	0	2	0	2	0	8	0	Dept. of Ag.	
Kawardha	Use of drips in orchard	HOF	-	FW	1	1	6	0	6	0	6	3	6	3	ATMA	
Kawardha	Plant propagation techniques	HOF	-	FW	1	1	5	2	2	2	2	2	6	2	ATMA	
Kawardha	Processing and value addition	HOT	-	FW	1	1	4	1	4	1	4	1	8	1	ATMA	
Kawardha	Nursery Management	CP	--	FW	1	1	6	2	5	0	5	0	6	0	ATMA	
Kawardha	Seed Production	CP	-	FW	1	1	6	2	6	2	6	2	4	2	ATMA	
Kawardha	Integrated crop management	CP	-	FW	1	1	8	1	6	1	6	1	6	1	ATMA	
Kawardha	Production of organic inputs	CP	-	FW	1	1	4	2	2	2	2	2	4	2	ATMA	
Kawardha	Care and Buffalo management of cow and	LPM	-	FW	1	1	3	2	3	0	3	3	7	3	ATMA	
Kawardha	Vaccination and control measure	LPM	-	FW	1	1	5	2	7	2	7	2	5	2	ATMA	
Kawardha	Control of Ecto and Endo Parasites	LPM	-	FW	1	1	7	0	7	0	6	0	6	0	ATMA	
Kawardha	Integrated Pest Management	PLP	-	FW	1	1	4	0	8	0	8	3	4	3	ATMA	
Kawardha	Production of bio control agents and bio pesticides	PLP	-	FW	1	1	7	2	0	2	0	2	7	2	ATMA	
Kawardha	Insect Pest of Sugarcane	PLP	-	FW	1	1	3	3	5	3	5	3	7	3	ATMA	
Kawardha	Diseases of Sugarcane	PLP	-	FW	1	1	6	0	6	0	6	0	6	0	ATMA	
Kawardha	Diseases of Vegetable crop	PLP	-	FW	1	1	2	0	2	0	2	2	8	2	ATMA	
Kawardha	Disease and Insect of Pulse crop	PLP	-	FW	1	1	7	0	2	0	2	0	2	0	ATMA	
Kawardha	Integrated fish farming	FIS	-	FW	1	1	2	0	2	0	2	4	6	4	ATMA	
Kawardha	Carp breeding and hatchery management	FIS	-	FW	1	1	7	0	2	0	2	3	4	3	Dept. of Ag.	
Kawardha	Fish diseases	FIS	-	FW	1	1	5	2	5	2	5	2	5	2	Dept. of Ag.	
Kawardha	Nursery rearing of Fish	FIS	-	FW	1	1	5	0	2	0	2	0	5	0	Dept. of Ag.	
Kawardha	Uses Seed drill introduction	AEG	-	FW	1	1	6	3	6	0	6	2	4	2	Dept. of Ag.	

Table 5.5 Training Programmes for Panchayatiraj Institutions Office-bearers & members

Name of KVK	Title	Thematic area (as given in abbreviation table)	Sub-theme (as per column no 5 of Table T1)	Client (FW/RY/IS)	Duration (days)	No. of courses	No. of Participants								Sponsoring Agency	Fund received for training (Rs.)
							Gen		Others		SC		ST			
							M	F	M	F	M	F	M	F		
Kawardha	Crop Diversification	CP		IS	05	02										

Table 5.6 Evaluation/Follow up & Impact of the training programmes conducted by the KVK (all types of trainings)

Name of KVK	Title of the training	No. of trainees	Change in knowledge (Score)		Change in Production (q/ha)		Change in Income (Rs)		Impact on 1. Area expanded (ha) 2. No. of farmers adopted (no.) 3. % change in knowledge, production & Income
			Before	After	Before	After	Before	After	
Kawardha	Trichoderma Production Technology	40	10	50					100ha ,25 person adopted , 55 % knowledge increased, Rs. 2500extra income
Kawardha	Mushroom Production	25	12	40					20 person adopted , 45 % knowledge increased, Rs. 1500extra income
Kawardha	Seed production of Chickpea	50	05	45	13	15	23000	2700	200 ha, 20 person adopted, 70% knowledge increased.
Kawardha	Vermiculture	40	25	65					4 person adopted, 60 % knowledge increased, Rs one lac extra income
Kawardha	Nursery Management of Horticultural crops	45	35	75					10 person adopted, 90 % knowledge increased, Rs 25000 extra income

6. EXTENSION ACTIVITIES

Name of the KVK	Activity	No. of activities (Targeted)	No. of activities (Achieved)	Detail of Participants						Remarks		
				Farmers (Others)		SC/ST (Farmers)		Extension Officials		Purpose	Topic s	Crop Stages
				M	F	M	F	M	F			
Kawardha	Field Day	10	06	309	08	316	12	5	2	To tell the farmers & RAEOs about cultivation of crops and management of insects and diseases		
Kawardha	Kisan Mela	02	02	1425	481	861	356			To let the farmers of the district know about New Ag. Technology		
Kawardha	Kisan Ghosthi	10	25	389	08	376	22			To let the farmers of the district know about New Ag. Technology		

Name of the KVK	Activity	No. of activities (Targeted)	No. of activities (Achieved)	Detail of Participants						Remarks		
				Farmers (Others)		SC/ST (Farmers)		Extension Officials		Purpose	Topic s	Crop Stages
				M	F	M	F	M	F			
Kawardha	Exhibition	02	04	Mass						To let the farmers of the district know about New Ag. Technology		
Kawardha	Film Show	08	-							Crop Production and Protection		
Kawardha	Method Demonstrations	10	10	06	65	10	25			Seed sowing by Seed Drill, Planting System of fruit crops, Soil sampling		
Kawardha	Farmers Seminar	06	06	245	5	86	3			-		
Kawardha	Workshop	12	12	-	-	-	-	19	05	Discuss with agriculture and allied department concern of major constraint and opportunity		
Kawardha	Group meetings	15	15	110	32	85	26	25	05	To know about the need assessment for trainings		
Kawardha	Lectures delivered as resource persons	25	41	mass	mass	mass	mass			To tell about cultivation practices of crops, to solve seasonal problems related to insect/pests & diseases of crops		
Kawardha	Newspaper coverage	50	63	mass	mass	mass	mass			Seasonal problems, their remedy and KVK activities		
Kawardha	Radio talks	00	00									
Kawardha	TV talks	00	0									
Kawardha	Popular articles	12	06									
Kawardha	Extension Literature	10	12									
Kawardha	Farm advisory Services	05	-									
Kawardha	Scientific visit to farmers field	50	596							Seasonal problems related to insect/pests & diseases of crops		

Name of the KVK	Activity	No. of activities (Targeted)	No. of activities (Achieved)	Detail of Participants						Remarks		
				Farmers (Others)		SC/ST (Farmers)		Extension Officials		Purpose	Topic s	Crop Stages
				M	F	M	F	M	F			
Kawardha	Farmers visit to KVK	20	3924							To enquire about cultivation practices of crops , source & availability of seeds, problems related to insect/pests & diseases of crops		
Kawardha	Diagnostic visits	14	78	342	107	133	49			Late blight of Tomato ,Chili Leaf Curl, Chickpea wilt, Paddy BPH. Sugarcane Red rot and Borers		
Kawardha	Exposure visits	01	02	35	-	35	-					
Kawardha	Ex-trainees Sammelan	01	02	25	10	22	05					
Kawardha	Soil health Camp	01	01	256	-	182	0					
Kawardha	Animal Health Camp	01	01	23	-	18	0					
Kawardha	Agri mobile clinic	00	00									
Kawardha	Soil test campaigns	00	01									
Kawardha	Farm Science Club conveners meet	00	00									
Kawardha	Self Help Group conveners meetings	01	07									
Kawardha	Mahila Mandals conveners meetings											
Kawardha	Celebration of important days (World environment day)		04	111	23	65	11					

7. Literature Developed/Published (with full title, author & reference)

7.1 KVK Newsletters

KVK Name	Date of start	Periodicity	Number of copies printed	Number of copies distributed
Kawardha	01 April, 2008	Quarterly	4000	3566

7.2 Literature developed/published

KVK Name	Type	Title	Author's name	Number of copies
Kawardha	Bulletin	Samvit prabandhan dwara alsi fasal paudh surksha	Dr. B.P.Tripathi and others	1000
Kawardha	Bulletin	Arhar utpadan ki unnat taknik	B.S.Parihar and Others	1000
Kawardha	Bulletin	Chhane ki bipul utpadan taknik	Dr.B.P.Tripathi and Others	1000
Kawardha	Bulletin	Masoor ki unnat kast ttaknik	Smt Swati Sharma and Others	1000
Kawardha	Bulletin	Sarson me akikrit paudh surksha	Er.T.S.Sonwani and others	1000
Kawardha	Bulletin	Soybeen utpadan prodyoki	B.S.Parihar and Others	1000
Kawardha	Bulletin	Madhumakhi palan ya Apiculture	Swati Sharma and Others	1000
Kawardha	Bulletin	Sammanvit prabandhan dwara Ganna fasal paudh	Swati Sharma and Others	1000
Kawardha	Bulletin	Bhandaran ke kit evam unka Sammanvit prabandhan	Swati Sharma and Others	1000
Kawardha	Bulletin	Arbi (Kochai) evam Jimikand ki unnat utpadan taknik	P.Kant and Others	1000
Kawardha	Article	Sabji vargeey fasale evm wriddhi niyamak	Pramila Kant and Dr. B.P.Tripathi	-
Kawardha	Article	Bater palan labhdayak vyavsay	Dr. Nutan Ramteke	-
Kawardha	Folder	Aam ke pramukh kit evam Ekikrit prabandhan		
Kawardha	Folder	Resham kit palan ya Sericulture		
Kawardha	Folder	Oyester Mushroom Utpadan		
Kawardha	Folder	Trichoderma Jaiv Fafund Nashak banana va upyog karne ki vidhi		

7.3 Details of Electronic Media Produced

KVK Name	Type of media (CD / VCD / DVD / Audio-Cassette)	Title of the programme	Number
Kawardha	DVD	Kharif Kisan Mela	1
Kawardha	DVD	Rabi Kisan Mela	1
Kawardha	DVD	Crop cafetariya	1
Kawardha	DVD	Field Day	1

8. Production and supply of Technological products

8.1 SEED production

KVK Name	Major group/class	Crop	Variety	Quantity (qt.)	Value (Rs.)	Provided to No. of Farmers	Expected area coverage (ha.)
Kawardha	Cereal	Paddy	Indira barani dhan-1	23.40	-	Sold to Beej Nigam	23
Kawardha	Oilseed	Soybean	JS-335	97.33	-	Sold to NSP & Beej Nigam	70

KVK Name	Major group/class	Crop	Variety	Quantity (qt.)	Value (Rs.)	Provided to No. of Farmers	Expected area coverage (ha.)
Kawardha	Pulse	Green Gram	HUM -12	13.48	-	Sold to NSP, Raipur	30
Kawardha	Pulse	Pigeon pea	Asha	17.50	-	Sold to Beej Nigam	50
Kawardha	Pulse	Chickpea	JG-226,JG-14	107.50	-	Sold to Beej Nigam	75
Kawardha	Cereal	Wheat	Kanchan	33.00	-	Sold to Beej Nigam	20

8.2 Planting Material production

KVK Name	Major group/class	Crop	Variety	Nos.	Value (Rs.)	Provided to No. of Farmers	Expected area coverage (ha.)
Kawardha	Agronomy	Sugarcane	-	175q.	-	08	3.5
Kawardha	Horticulture	Onion	Bhima Dark red	300		3	
		Brinjal		100		2	
		Tomato		100		2	

8.3 Production Units (bio-agents / bio pesticides/ bio fertilizers etc.) * Name of product should follow same pattern and spelled correct

KVK Name	Major Group Bio agent/Bio fertilizers/Bio Pesticides	Name of the Product	Qty (In Kg)	Qty (In No)	Value (Rs.)	Provided to No. of Farmers	Expected area coverage (ha.)
Kawardha	Bio Agents	Trichoderma	100kg				

8.4 Livestock and fisheries production

KVK Name	Name of the animal / bird / aquatics	Breed	Type of Produce	Qty. (kg/qt./litre)	Value (Rs.)	No. of Beneficiaries
Kawardha	Cow	Sahiwal	Milk	647.25 litre	24,411/-	15

9. Activities of Soil and Water Testing Laboratory

9.1 Details of soil samples analyzed so far :

KVK Name	Status of establishment of Lab	Year of establishment	Details	No. of Samples	No. of Farmers	No. of Villages	Amount realized	Soil report distributed to the farmers (Nos)
Kawardha		`		121	1421			1421

9.2 Details of water samples analyzed so far :

KVK Name	Status of establishment of Lab	Year of establishment	Details	No. of Samples	No. of Farmers	No. of Villages	Amount realized	Water report distributed to the farmers (Nos)
		`						

10. Rainwater Harvesting

Training programmes conducted by using Rainwater Harvesting Demonstration Unit

Name of KVK	Date	Title of the training course	Client (PF/RV/EF)	No. of Courses	No. of Participants including SC/ST			No. of SC/ST Participants		
					Male	Female	Total	Male	Female	Total

11. Utilization of Farmers Hostel facilities

KVK Name	Months	Year	Title of the training course	Duration of training	No. of trainees stayed	Trainee days (days stayed)	Reason for short fall (if any)	Accommodation available (No. of beds)

12. Utilization of Staff Quarters facilities

KVK Name	Year of construction	Year of allotment	No. of quarters occupied	No. of quarters vacant	Reasons for vacant quarters, if any
	-	-	-	-	-

13. Details of SAC Meeting

KVK Name	Date of SAC meeting	No. of SAC members attended	Major recommendations

Kawardha	04.05.2015	68	OFT as well as FLD on improved cultivation practices of Oilseeds, Pulses, Cereals, & vegetables. Training on Sugarcane production and Protection technology. Promotion of use of organic source of nutrients. Promotion of seed treatment before sowing. Production of Trichoderma viride locally

14. Status of Kisan Mobile Advisory (KVK-KMA)

KVK Name	No. of messages sent	No. of beneficiary		Sponsoring agency (NIC, Farmers Portal, etc.)	Major recommendations
		Farmers	Ext. Pers.		
Kawardha	51	24235	100	Farmers Portal	Crop cultivation, IPM, IDM, weather information and others

15. Status of Convergence with various agricultural schemes (Central & State sponsored)

KVK Name	Name of scheme	Name of Agency (Central/state)	Funds received (Rs.)	Activities organized	Operational Area	Remarks
Kawardha	Others (Plz. Specify) - TSP	IIPR, Kanpur	256000	FLD, Field Day, Ag. Exhibition	S. Lohara ,Bodla Block	-
Kawardha	N.F.S.M (Cluster demonstration on Chickpea and Lentil)	Central	412500	FLD, Field Day, Ag. Exhibition -	Kawardha-	-
Kawardha	NMOOP (Cluster demonstration on Mustard /Rapeseed and Linseed)	Central	230000	FLD, Field Day, Ag. Exhibition	Bodla, Kawardha	-
Kawardha	Soil Health card Scheme	IGKV, Raipur	231400.00	-	-	-
Kawardha	VTP Training	CSSDA, Raipur	146000.00	Training on fruit and vegetable preservation, and repair and maintenance of sprayer and duster	-	-
Kawardha	ATMA		40000.00	OFT	Kawardha	

16. Status of Revolving Funds (Rs.)

KVK Name	Account No.	Opening balance (Rs.)	Closing balance (Rs.)	Current status (Rs.)
Kawardha	32017886366	1056466	1194956	1194956

17. Awards & Recognitions

KVK Name	Name of award /awardee	Type of award (Ind./Group/Inst./Farmer)	Awarding Organizations	Amount received
Kawardha	Smt. Anita Chandrakar	District level	IGKV	5000/-
Kawardha	Shri Sanjay Vaishnav	District level	IGKV	5000/-
Kawardha	Shri Milap	District level	IGKV	5000/-
Kawardha	Shri Sundar Singh Baiga	District level	IGKV	5000/-

18. Details of KVK Agro-technological Park.

a) Have you prepared layout plan, where sent?

S.No.	Name of KVK	Technology park proposal developed(yes/no)	If yes, where sent ? (ZPD/DES/any other, pl. sp.)

b) Details about Technology Park

Name of KVK	Name of Component of Park	Detail Information (If established)
Kawardha	Crop Cafeteria	05
Kawardha	Technology Desk	-
Kawardha	Visitors Gallery	04
Kawardha	Technology Exhibition	05
Kawardha	Technology Gate-Valve	-

c). Crop Cafeteria-

Sr. No.	Theme of Crop Cafeteria	No. of Crop Cafeteria
1	Integrated crop management	04

19. Farm Innovators- list of 10 Farm Innovators from the District

Sr. No.	Name of KVK	Name of Farm Innovator	Name of the Innovation	Address of the farmer with Mobile No.
1	Kawardha	Prabhat Chandrakar	SRI method cultivation in Rice	Vill., Post – Bharewa (Puran) Block – Pandariya District - Kabirdham Mo. No. - 9977335961
2	Kawardha	Yugal kishor chandravanshi	Crop diversification	Shri Yugal Kishor Chandravanshi Village – Ramhepur Khurd Block - Kawardha District – Kabirdham Mo.No. - 9977956495

3	Kawardha	Director Sahu	Banana cultivation	Vill.- Bisatola, Post - Singhangarh Block – Sahaspur Lohara Distt. - Kabirdham Mo.No. - 9179571415
4	Kawardha	Santosh merawi	Vegetable cultivation	Vill., post - Sonbarsa, Thana- Pipariya, Block - Kawardha District- Kabirdham Mo.No. - 9752323221
5	Kawardha	Banshiram Nisad	Poultry farming	Vill. – Newari Post - Kawardha Block - Kawardha District - Kabirdham Mo. N.- 8305970626
6	Kawardha	Santosh Singh	Tuber crop cultivation	Vill. – Khairjithi Khurd, Post – Ranisagar Sonpuri, Thana- Pipariya Block- Kawardha Distt.- Kabirdham Mo. No.-9752395040
7	Kawardha	Sanjay Vaishnav	Oil seed and pulse production	Vill.- Dongariya Khurd, Post- Bharewapuran Block - Pandariya District - Kabirdham Mo. No. -9752109520
8	Kawardha	Kaushal Kishor Das Vaishnav	Banana cultivation	Vill- Karesara, Post- Udiyakhurd, Block- S. Lohara District- Kabirdham Mo. No. -8959860768
9	Kawardha	Balaram Chandravanshi	Intercropping in sugarcane	Vill.- Charbhata Khurd, Post - Pandatarai Block - Pandariya District - Kabirdham MO. NO.- 9111129293
10	Kawardha	Ram Khilawan Dahariya	Tuber Crop cultivation	Vill, Post – Sonpuri Thana - Dullapur Block - Kawardha District - Kabirdham Mo. No. - 9630807511

20. KVK interaction with progressive farmers

Sr. No.	Date and month of interaction programme with progressive farmers	No. of progressive farmers to be participated
1	02.05.2015,28.05.2015,17.06.2015,02.07.2015,08.07.2015	23
2	16.07.2015,24.07.2015,25.07.2015,04.08.2015,21.08.2015	31

21. Outreach of KVK

Name of KVK	Number of Blocks		Number of Villages	
	Intensive	Extensive	Intensive	Extensive
Kawardha	04	04	38	79

Intensive- OFTS, FLDS etc

Extensive- Literatures, Publications, and Awareness programmes etc.

22. Technology Demonstration under Tribal Sub Plan on Pulses/ Programme on Harnessing Pulses/ Quality Protein Maize, if applicable.

Sr. No.	Name of crop under Technology demonstration	Area under the programme	No. of Extension Activities	Remarks / Lessons learnt
1	Pigeon pea	12	1	
2	Urd bean	12	1	
3	Chick pea	70	1	

23. KVK Ring

Sr. No.	Name of Ring Partner	Sharing Activity	Lessons learnt/ Experiences gained.
1	KVK,Rajnadgaon	Experts, exposure activities and sharing views etc.	
2	KVK,Bhatapara	Experts, exposure activities and sharing views etc.	

24. Important visitors to KVK

Name of KVK	Name of Visitor	Date of Visit	ICAR	SAUs	Others	Remarks
Kawardha	Dr. M.P.Thakur	09.10.2015	-	DES, IGKV, Raipur	-	The crops of soyabean, pigeonpea and rice demonstration was excekent, improved methods were adopted. IFS model, mother orchard and other demonstration units are very good
Kawardha	Shri. P.Dayanand	08.07.2015	-	-	Collector Kawardha	KVK is known for its training, research, workshop, motivation and innovation for the betterment of agriculture and KVK is really doing double job.
Kawardha	Shri Ashok Sahu	08.07.2015	-	-	Hon'ble MLA	Congratulation for good working for farmers of Kabirdham district.

Kawardha	Shri M.K.Chandrakar	08.09.15	-	-	M.D.Seed Certification, Raipur	Good effort for KVK purpose farmer are getting knowledge in the existing field crop and technology.
Kawardha	Dr. P.K. Chandrakar	08.09.2015	-	-	Principal Scientist, NSP, IGKV, Raipur.	Seed production programme is very well
Kawardha	Shri Suresh Thakur	08.09.2015			Seed certification officer, Seed Certification, Raipur.	The condition of soyabean and mung crop is very well.
Kawardha	Dr. H.G. Sharma	18.09.2015	-	Professor, Fruit Science, IGKV, Raipur	-	Good effort and visionary approach for establishing a horticulture nursery at KVK Kawardha.
Kawardha	Prof. Anwar Alam	23.09.2015	Ex. VC, IGKV Raipur, SKUAST-K, and DDG (Engg.) ICAR New Delhi.	-	-	I am impressed with the demonstration laid out. Crops were excellent.
Kawardha	Dr. A.P. Singh	23.09.2015		Pri.Sci. IGKV, Raipur.	-	Excellent use of land, well maintained fields.
Kawardha	Dr. V.K. Tripathi	23.09.2015	-	ADR, IGKV, Raipur.	-	Tremendous improvement in Farm activity
Kawardha	Dr. S.K. Patil	26.09.2015	-	VC, IGKV, Raipur	-	I am very much impressed by the quality of demonstration, seed production and other farm activity.
Kawardha	Shri Ashok Sahu	01.10.2015	-	-	Honble MLA, Kawardha	Visited farm and crops are good and helpful for farmers
Kawardha	Shri Santosh Patel	01.10.2015	-	-	President Jila Panchayat, Kabirdham	
Kawardha	Dr. A.P. Dwivedi	09.10.2015	Sr. Scientist Agronomy, ATARI, ICAR, ZINE-VII, Jabalpur, M.P.	-	-	Visited KVK Farm of Kawardha. Instructional farm of KVK is well managed by different activity like crop cafeteriya on Sugar cane, soyabean, Rice var., BBfir soyabean, inter cropping of Pigeonpea and soyabean. Establishment of mother orchard is very good.
Kawardha	Dr. J.S. Urkurkur	14.10.2015	-	Director research, IGKV, Raipur.	-	Very good progress in KVK. Demonstration plots are very good.
Kawardha	Dr. H.K. Vardia	14.10.2015	-	Dean Fisheries, Kawardha.	-	Very good demonstration of crops.
Kawardha	Dr. A.K. Sarawagi	14.10.2015		Pro and Head, IGKV Raipur	-	Demonstration of Rice crops and other crops is excellent and intercropping of pigeon pea and soyabean is also good.
	Dr. M.K.Singh	14.10.2015	-	Principal	-	-

Kawardha				scientist, IGKV, Raipur.		
Kawardha	Dr. Sanjay Sharma	14.10.2015	-	Principal scientist IGKV, Raipur.	-	-
Kawardha	Dr. P.K. Tiwari	14.10.2015	-	Principal scientist IGKV, Raipur.	-	-
Kawardha	Dr. Sandeep Bhandarkar	14.10.2015	-	Scientist, IGKV, Raipur.	-	-
Kawardha	Shri. P.G.Goswami	14.10.2015	-	-	ADA, Agriculture Deptt. Kabirdham	Demonstration of Sugar cane and paddy variety is very good.
Kawardha	Dr. A.K. Singh	29.10.2015	-	Scientist (Plant Pathology) CARS, Raigarh.	-	A good work is being done by KVK in respect of crop production
Kawardha	Dr. R.K.S.Tiwari	04.11.2015	-	Principal Scientist (Plant Pathology) TCBCARS, Bilaspur.	-	Very good crop diversity is being maintained at KVK Kawardha along with elitist use of field bunds for papaya etc.
Kawardha	Shri Ashok Sahu	05.12.2015	-	-	Honble MLA, Kawardha	Good programme, this kind of programme should be done for farmers.
Kawardha	Shri Santosh Patel	05.12.2015	-	-	President Jila Panchayat, Kabirdham	Information should be given to farmers to increase the production.
Kawardha	Shri Dhananjay Devangan	05.12.2015	-	-	Collector- Kabirdham ,	Farmers fair was organized for world soil health day. KVK is giving very important information to the farmers
Kawardha	Shri. Nageshwar Lal Pandey	05.12.2015	-	-	DDA, Kabirsham	Various activity i.e. training, demonstration on crop, organic farming, plant protection, integrated farming system conducted by KVK Kawardha observed by me are excellent, qualitative and fruit full for farmer communities
Kawardha	Shri Balram ji Das Tandon	26.06.2015	-	-	Hon'ble Governor, C.G.,	Inauguration of KVK building and pre Kharif mela.
Kawardha	Shri Brijmohan Agrawal	26.06.2015	-	-	Honble Agriculture Minister, CG, Govt.,	Inauguration of KVK building and pre Kharif mela.
Kawardha	Shri Ajay Singh	26.06.2015	-	-	(IAS) APC,	Inauguration of KVK building and pre Kharif mela.
Kawardha	Dr. S.K. Patil	26.06.2015	-	Hon'ble Vice Chancellor,	-	Inauguration of KVK building and pre Kharif mela.
Kawardha	Shri Motiram	26.06.2015	-	-	PS and MLA,	Inauguration of KVK building and pre Kharif

	Chandravanshi				Pandariya,	mela.
Kawardha	Dr. Siyaram Sahu,	26.06.2015	-	-	Ex Parliamentary Secretary	Inauguration of KVK building and pre Kharif mela.
Kawardha	Shri Santosh Patel, Kabirdham	26.06.2015	-	-	President, Jila Panchayat	Inauguration of KVK building and pre Kharif mela.
Kawardha	Shri Ashok Sahu	24.01.2016	-	-	Hon'ble MLA, Kawardha	
Kawardha	Smt Nirupama Chandrakar	24.01.2016	-	Board Member, IGKV Raipur	-	
Kawardha	Dr. Deepak Sharma	24.01.2016	-	Principal Scientist, IGKV Raipur	-	
Kawardha	Dr. Amit Dixit	22.02.2016	Principal Scientist, ICAR, WIBSM, Raipur	-	-	I visited this KVK thrice and I am delighted to see the kind of progress has taken place. I very compliment the team of KVK, Kawardha working in a holistic approach for the farming community.
Kawardha	Dr. G.K. Shrivastava	22.02.2016	-	Professor/NCC officer, IGKV, Raipur	-	KVK staff is doing marvelous job in executing and demonstrating the agricultural technology at the KVK farm.
Kawardha	Shri Mannu Ram Chandravanshi	23.02.2016	-	-	Sabhapati, Krishi Sthai Samiti, Jila panchayat, Kabirdham.	Demonstration of wheat and chick pea is very good for farmers.

25. Status of KVK Website:

Sr. No.	Name of KVK	Date of start of website	No. of updates since inception	No. of visitors
1	Kawardha	04.02.2014	10	2021

26. E-CONNECTIVITY Nil

Name of KVK	Number and Date of Lecture delivered from KVK Hub				No. of lectors organized by KVK	Brief achievements	Remarks
	Date	No. of Staff attended	No. of call received from Hub	No. of Call mate to Hub by KVK			

27. Status of RTI -Nil

Sr. No.	Name of KVK	No. of RTI applications received	No. of RTI appeals	Remarks

28. Status of Citizen Charter- Nil

Sr. No.	Name of KVK	Query received(Nos)	Query Disposed(Nos)	Remarks

29. Attended HRD Programmes organized by ZPD

Name of KVK	Name of Staff	Post held	Programme attended (Nos)	Remarks
	Total			

Name of KVK	Total Number of staff Attended HRD Programme organized by ZPD (nos)	Total Number of Programme attended (Nos)

30. Attended HRD Programmes organized by DES

Name of KVK	Name of Staff	Post held	Programme attended (Nos)	Remarks

Name of KVK	Total Number of staff Attended HRD Programmes organized by DES (nos)	Total Number of Programmes attended (Nos)

31. Attended HRD Programmes by KVK Staff (Refresher course, Short course, Training programme etc.)

Name of KVK	Name of Staff	Post held	Programmes attended (Nos)	Remarks

Name of KVK	Total Number of staff Attended HRD Programmes by KVK staff (nos)	Total Number of Programmes attended (Nos)

32. Agri alert report (Epidemic, high serious nature problem, Cyclone etc. reported first time to ZPD, SAU, Agri. Deptt. and ICAR)

Name of KVK	Alert observed	Particulars	Reported to organization

33. DETAILS OF TECHNOLOGY WEEK CELEBRATIONS

Name of KVK	Types of Activities	No. of Activities	Number of Participants	Related crop/livestock technology

34. INTERVENTIONS ON DROUGHT MITIGATION

Introduction of alternate crops/varieties

Name of KVK	Crops/cultivars	Area (ha)	Number of beneficiaries

Major area coverage under alternate crops/varieties

Name of KVK	Crops	Area (ha)	Number of beneficiaries

Farmers-scientists interaction on livestock management

Name of KVK	Livestock components	Number of interactions	No. of participants
Kawardha	Livestock disease management and fodder production	10	135

Animal health camps organized

Name of KVK	Number of camps	No. of animals	No. of farmers
Kawardha	1	100	41

Seed distribution in drought hit states

Name of KVK	Crops	Quantity (qtl)	Coverage of area (ha)	Number of farmers

Seedlings and Saplings distributed

Name of KVK	Crops	Quantity (No.s)	Coverage of area (ha)	Number of farmers

Seedlings				

Bio-control Agents

Name of KVK	Bio-control Agents	Quantity (q)	Coverage of Area (ha)	No. of farmers

Bio-Fertilizer

Name of KVK	Bio-Fertilizer	Quantity (kg)	Coverage of Area (ha)	No. of farmers

Vermis Produced

Name of KVK	Vermis Produced	Quantity (q)	Coverage of Area (ha)	No. of Farmers

Large scale adoption of resource conservation technologies

Name of KVK	Crops/cultivars and gist of resource conservation technologies introduced	Area (ha)	Number of farmers

Awareness campaign

Name of KVK	Meetings		Gosthies		Field days		Farmers fair		Exhibition		Film show	
	No.	No. of farmers	No.	No. of farmers	No.	No. of farmers	No.	No. of farmers	No.	No. of farmers	No.	No. of farmers
Kawardha	04	210	05	235			02	3123				

35. Proposal of NICRA

1. Technologies to be Demonstrated

Name of Technology	Name of Crop	Area (ha.)	Yield	% change in Yield	No. of farmers benefitted

2. Proposed Extension Activities in NICRA Village

Name of Activity	Number of Participants/Beneficiaries to be Covered			
	Farmers	Farm Women	Official	Total

3. Proposed Training Activities in NICRA Village

Name of Activity	Number of Participants/Beneficiaries to be Covered			
	Farmers	Farm Women	Official	Total

4. Proposed Activities for Fodder Bank

Established (Years)	Capacity	Current Status

5. Proposed Activities for Seed Bank

Established (Years)	Capacity	Current Status

6. Public Representative/District Administration Visited in NICRA Village

Name of Representative/Officer	Designation	Date of Visit	Any Special Remark by Visitors

7. Feedback of Farmers for future improvement, if any.

36. Proposed works under NAIP (in NAIP monitoring format)

37. Case study / Success Story to be developed – Two best only in the following format

Name of the KVK, **TITLE**, **Introduction**, KVK intervention, Output, Outcome, Impact


Sr. no.	Name of KVK	No. of success stories	No. of case studies
1	Kawardha	2	


Name of Farmers	Shri Yugal Kishor Chandravanshi
Village	Ramhepur Khurd
Block	Kawardha



Address	Shri Yugal Kishor Chandravanshi Village – Ramhepur Khurd Block - Kawardha District – Kabirdham
Contact details (Phone, Mobile, email Id)	9977956495
Landholding (in ha.)	12
Irrigated (in ha.)	12
Un- irrigated (in ha.)	-
Membership details (in Self-Help Group, Producers Cooperative /Company, Cooperative Society (etc)	Member of ATMA Project
Brief about individual/ Group (about 250 words)	Shri Yugal Kishor Chandravanshi is a large farmer of Village – Ramhepur Khurd Block – Kawardha, District – Kabirdham (C.G.) village Ramhepur Khurd is situated at a distance of 20 km from Kawardha. He holds 12.00 ha. agricultural land with good irrigation facility. Shri Yugal Kishor Chandravanshi used to paddy, soyabean, Pigeon pea and Ground nut in 12.00 ha. land during each Kharif and Rabi season but due to adverse climatic condition some times his crops were failed and annually he could earn total Rs. 2 Lac from this crop
Write up on of Success Story (about 500 words)	Shri Yugal Kishor Chandravanshi is an innovative farmer. After coming in contact with Krishi Vigyan Kendra in the year 2013-14. Shri Chandravanshi was convinced by KVK Scientist to change the Rice/ Soyabean cropping system. Under the guidance of KVK, Scientist Shri Chandravanshi started growing improved varieties of vegetable and fruit crops together rice, soyabean, pigeon pea, groundnut and sugarcane. He adopted integrated technique of farming. Shri Chandravanshi followed improved nursery management techniques i.e. seed treatment by fungicide and bio control agents used net mulches and used biopesticides in nursery as well as in mainfield. The cost of cultivation of improved production technique was higher as comparable to that of traditional method. However, the yield is also improved
Factors responsible for success (Eg. Individual efforts, leadership qualities, innovativeness and support from Govt. Department, responsiveness to change etc)	Individual efforts, Innovativeness, Leadership qualities, support from Govt. Department

Impact of Success Story on other farmers in locality	Shri Yugal Kishor Chandravanshi become a role model by successful production of vegetable and fruit crops in his village and the adjoining village	
Award/reward /appreciation received	Appreciation Letter received from KVK, Kawardha	
Impact factors	Before	After
Net Saving/Net Profit	1.5-2.0 lac/annum	4.5-5.0lac/annum

Name of Farmers	Shri SANTOSH MERAWI	
Village	Sonbarsa	
Block	Kawardha	

Address	Shri Santosh Merawi Village – Sonbarsa Block - Kawardha District – Kabirdham	
Contact details (Phone, Mobile, email Id)		
Landholding (in ha.)	8	
Irrigated (in ha.)	8	
Un- irrigated (in ha.)	-	
Membership details (in Self-Help Group, Producers Cooperative /Company, Cooperative Society (etc))	Member of Self help group	
Brief about individual/ Group (about 250 words)	Shri Santosh Merawi is a large farmer of Village – Sonbarsa Block – Kawardha, District – Kabirdham (C.G.) village Sonbarsa is situated at a distance of 15 km from Kawardha. He holds 8.00 ha. agricultural land with good irrigation facility. Shri Santosh Merawi used to paddy, soyabean, Pigeon pea in 8.00 ha. land during each Kharif and Rabi season.	

Write up on of Success Story (about 500 words)	Shri Santosh Merawi is a innovative farmer. After coming in contact with Krishi Vigyan Kendra in the year 2012-13. Shri Merawi was convinced by KVK Scientist to change the Rice/ Soyabean cropping system. Under the guidance of KVK, Scientist Shri Merawi started growing improved varieties of vegetable and fruit crops together rice,soyabean, pigeon pea, groundnut and sugarcane. He adopted integrated technique of farming. Shri Merawi followed improved nursery management techniques i.e. seed treatment by fungicide and bio control agents used net mulches and used biopesticides in nursery as well as in mainfield. The cost of cultivation of improved production technique was higher as comparable to that of traditional method. However, the yield is also improved.	
Factors responsible for success (Eg. Individual efforts. leadership qualities, innovativeness and support from Govt. Department, responsiveness to change etc)	Individual efforts, Innovativeness	
Impact of Success Story on other farmers in locality	Shri Santosh Merawi become a role model by successful production of vegetable and fruit crops in his village and the adjoining village	
Award/reward /appreciation received		
Impact factors	Before	After
Net Saving/Net Profit	2.0-2.5 lac/annum	3.5-4.5 lac/annum

38. Well labeled Photographs for each activity of the KVK (Soft copies as well as hard copy- specially for all OFT along with the problem) –

PHOTOGRAPH OF EACH ACTIVITY 2015-2016

CROP CAFETERIA

CROP CAFETERIA OF PADDY



CROP CAFETERIA OF PADDY



CROP CAFETERIA OF PADDY

CROP CAFETERIA OF PADDY



CROP CAFETERIA OF PADDY



CROP CAFETERIA OF PADDY

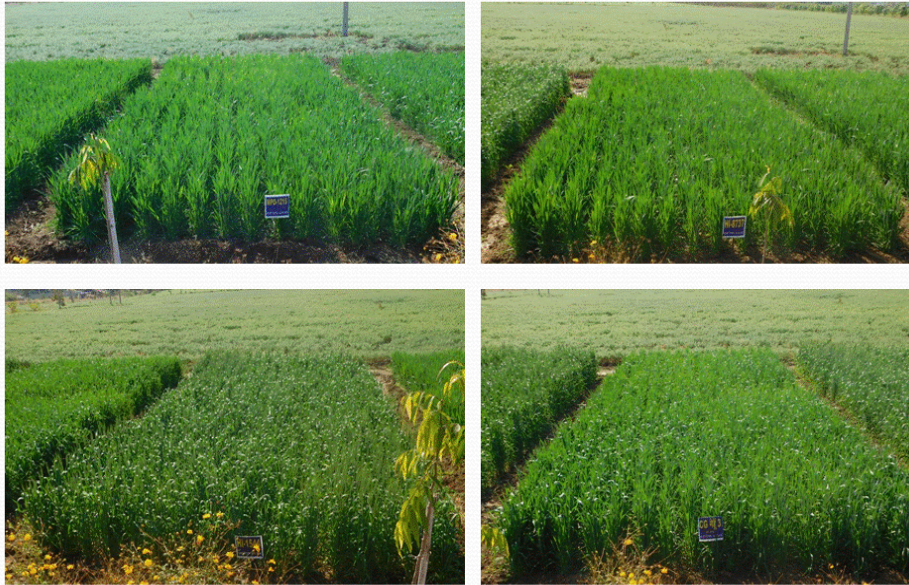
CROP CAFETERIA OF WHEAT



CROP CAFETERIA OF CHICK PEA



CROP CAFETERIA OF WHEAT



CROP CAFETERIA OF WHEAT



DEMONSTRATION OF BBF FOR SOWING OF CHICKPEA



KVK FARM



CROP CAFETERIA OF SOYBEAN



CROP CAFETERIA OF SOYBEAN

KVK FARM

AgriSearch with a 1/2 human touch

SEED PRODUCTION PROGRAMME



SEED PRODUCTION PROGRAMME OF SOYBEAN



KVK FARM



DEMONSTRATION OF INDIRA SOYA SEED DRILL AT KVK FARM



DEMONSTRATION OF RAISED BED PLANTER AT KVK FARM

AgriSearch with a 1/2 human touch

INTERCROPPING OF PIGEON PEA AND SOYBEAN



INTERCROPPING OF PIGEON PEA AND SOYBAEN



SEED PRODUCTION PROGRAMME OF PIGEON PEA



DEMONSTRATION OF RAISED BED PLANTER AT KVK FARM



SEED PRODUCTION PROGRAMME OF SOYBEAN

KVK FARM



MEDICINAL GARDEN

KVK FARM



SEED PRODUCTION PROGRAMME OF GREEN GRAM (HUM-12)



SEED PRODUCTION PROGRAMME OF PIGEON PEA DEMONSTRATION OF MULTI CROP SEED CUM



DEMONSTRATION OF SELF PROPELLED PADDY TRANSPLANTER AT KVK FARM

KVK FARM



CROP CAFETERIA OF SUGARCANE

KVK FARM



SEED PRODUCTION PROGRAMME OF INDIRA BARANI DHAN-1



SEED PRODUCTION PROGRAMME PIGEON PEA



SEED PRODUCTION PROGRAMME WHEAT



TRIBAL SUB PLAN

FLD ON CHICKPEA UNDER TSP



FLD ON CHICKPEA UNDER TSP



FLD ON URD AND PIGEON PEA UNDER TSP



TRAINING AND FIELD DAY PROGRAMME UNDER TSP



CLUSTER DEMONSTRATION ON OILSEED AND PULSES

Cluster Demonstrations on Mustard/Rap seed Crop



Cluster Demonstrations on Linseed Crop



Cluster Demonstrations on Lentil Crop



Cluster Demonstrations on Chickpea Crop



SCIENTIST & FARMERS VISIT TO KVK FARM

FARMERS VISIT TO KVK FARM



FARMERS VISIT TO KVK FARM



VILLAGE-THATHAPUR FARMERS VISIT TO KVK FARM



VILLAGE-THATHAPUR FARMERS VISIT TO KVK FARM



OFF CAMPUS TRAINING

OFF CAMPUS TRAINING



FIELD DAY ORGANIZED BY KVK KAWARDHA

FIELD DAY 2015-16



FIELD DAY 2015-16



FIELD DAY AT DHARAMPURA ON 14.03.2016



FIELD DAY AT PATHARRA ON 12.03.2016



FIELD DAY AT TAREGAON JUNGLE ON 31.03.2016



FIELD DAY AT BAIRAKH ON 14.01.2016



ON CAMPUS TRAINING

ON CAMPUS TRAINING



IN SERVICE TRAINING



VTP - 2015-16



VTP- 2015-16



RURAL YOUTH TRAINING

RURAL YOUTH TRAINING 2015-16

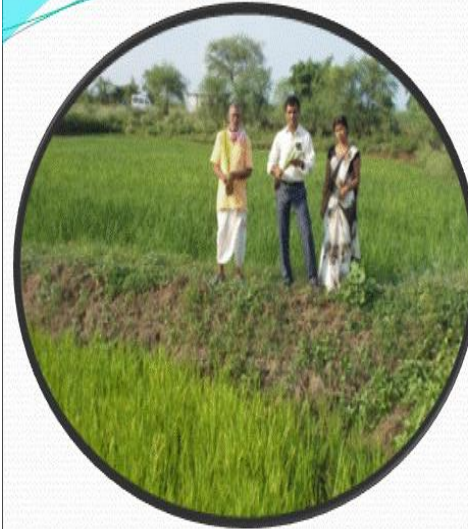


DIAGNOSTIC VISIT

Diagnostic Visit



Diagnostic Visit



SAC MEETING

SCIENTIFIC ADVISORY COMMITTEE (SAC) MEETING



SWACHHA BHARAT ABHIYAN

Swachha Bharat Abhiyan



VIP VISIT

HON'BLE VC, DR. S. K. PATIL VISITED KVK FARM



Dr. J. S. URKURKAR DRS, VISITED KVK FARM



PROF. ANWAR ALAM VISITED KVK FARM



DM, KABIRDHAM VISITED AT KVK



Scientist and VIP Visit at KVK Farm



AGRI. DEPTMENTAL OFFICER VISITED KVK FARM



KISAN MELA 2015-16

KISAN MELA & INAUGURATION OF KVK BUILDING



KISAN MELA & INAUGURATION OF KVK BUILDING



SOIL HEALTH DAY AND PRE RABI KISAN SAMMELAN ON 05.12.2015



TRAINING CUM AWARENESS PROGRAMME ON PPV&FRA ON 24.01.2016



SOIL HEALTH DAY AND PRE RABI KISAN SAMMELAN ON 05.12.2015



Pradhan Mantri Fasal Bima Yojna



FRONT LINE DEMONSTRATION (FLD)

FLD on Indira sona



FLD on JS-95-60



Demonstration on Seed cum fertilizer Drill for sowing of Soybean



FLD on JG-14



FLD on Ratan



FLD on Gajendra



FLD on Mushroom Production



FLD on Azolla Cultivation



COMPOSITE FISH PRODUCTION



FLD on Indira Arbi-1



ON FARM TRIAL (OFT)

OFT - 1



OFT - 2



OFT - 3



OFT - 4



OFT - 5



OFT -06



OFT - 6



OFT - 7



OFT on Bhima Dark Red

OFT - 08



OFT - 09



OFT - 10



OFT - 11



OFT on Onion Variety – Bhima Shakti

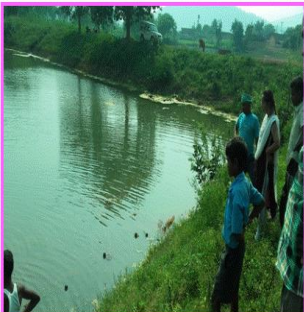
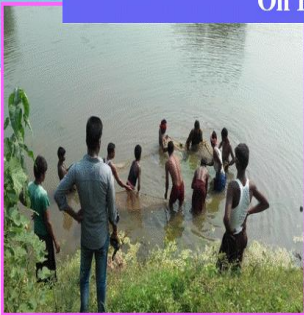
OFT - 12



OFT - 13



On Farm Trial- 14



On Farm Trial- 15



On Farm Trial- 16



OTHER ACTIVITY

PARTHENIUM AWARENESS WEEK



ANIMAL HEALTH CAMP 2015-16



HARIYAR CHHATTISGARH



Monthly Workshop-2015-16



PARTICIPATED IN RASHTRIYA KISAN MELA AT RAIPUR ON 26-28 DEC 2015



SEED HEALTH WEEK CELEBRATION



PARTICIPATED IN RASHTRIYA KISAN MELA AT RAIPUR ON 26-28 DEC 2015



ACTIVITY AT SANSAD ADARSH GRAM VILLAGE- GOTATOLA



